

## ***ROADIAN MTX***

THE ROADIAN MTX FROM NEXEN TIRE FEATURES AN AGGRESSIVE DESIGN THAT IS EXTREMELY VERSATILE FOR ON- AND OFF-ROAD DRIVING. THE CONSTRUCTION OF THE TIRE HAS BEEN IMPROVED TO MAXIMIZE YOUR LOAD AND TOWING CAPABILITIES WITHOUT SACRIFICING ANY OF THE RUGGED TRAITS OR ON-HIGHWAY DRIVING COMFORT ONE WOULD EXPECT FROM OUR ROADIAN LINE OF TIRES.

# STYLE

## TWO SIDES TO EVERY STORY.

THE MTX OFFERS DISTINCTIVELY  
DESIGNED DUAL SIDEWALLS, GIVING  
YOU THE FREEDOM TO CHOOSE THE  
LOOK THAT BEST REPRESENTS YOU  
AND YOUR VEHICLE.

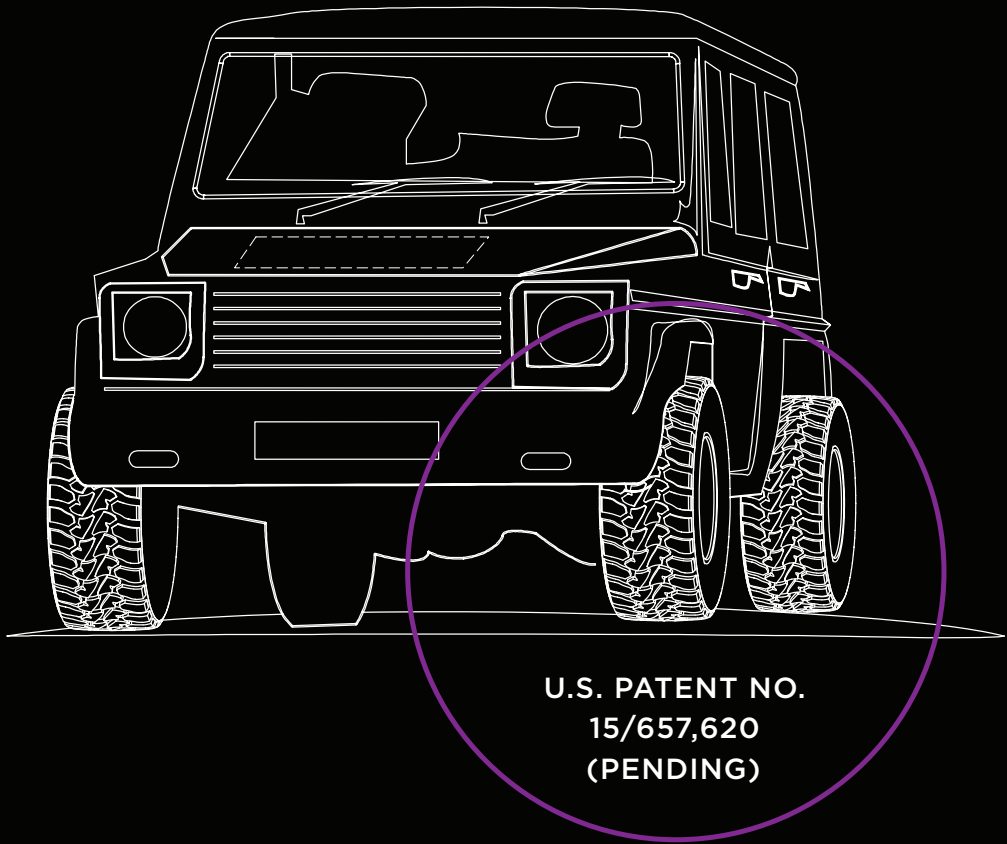
# IT'S AN ANIMAL WHEN YOU NEED IT TO BE.

ENGINEERED FOR MAXIMUM GRIP AND AGGRESSIVE CONTROL, THE MTX PROVIDES DURABILITY AND COMFORT BOTH ON AND OFF THE ROAD. BURLY LUGS CASCADE FROM THE TREAD TO THE SIDEWALL, KEEPING YOU GROUNDED NO MATTER WHERE YOU FIND YOURSELF.

# BEAST

# THE STRONG SILENT TYPE.

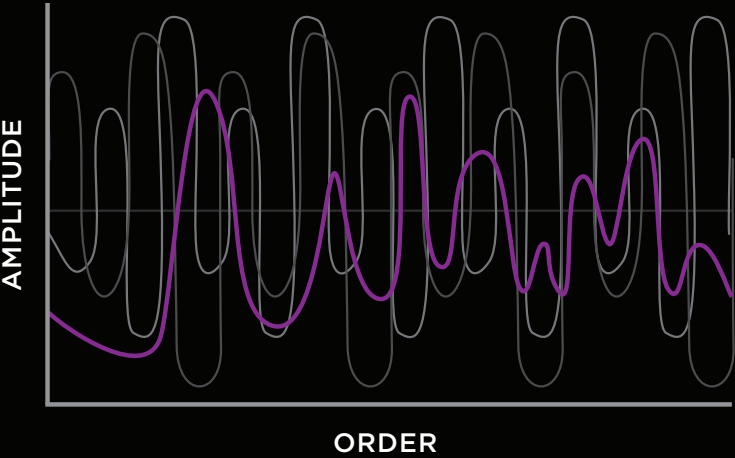
PATENTED, OPTIMIZED BLOCK POSITIONS  
REDUCE TIRE NOISE TO UNPRECEDENTED  
LEVELS. YOU SIMPLY WON'T BELIEVE  
YOU'RE DRIVING ON MUD TERRAIN TIRES.



## HIGHWAY DRIVING SOUND WAVES COMPARISON CHART

Nexen engineers have designed the MTX to emit varying noise frequencies, which help mitigate and cancel out tire noise. This technology reduces repetitive noises, which can amplify in sound intensity quickly.

- NEXEN
- COMPETITOR 1
- COMPETITOR 2



## VARIABLE PITCH TREAD BLOCKS PROVIDE PATENTED NOISE CANCELING

The MTX has been strategically designed to avoid repetitive tread block contact during the drive. Each horizontal line represents a different tread block contact ratio.



# 3-PLY EQUALS PEACE OF MIND.

**3-PLY**

THE MTX GIVES YOU THREE LAYERS OF SIDEWALL PROTECTION, SPECIFICALLY DESIGNED TO GIVE YOU MORE STABILITY, DURABILITY, AND PEACE OF MIND WHEN HAULING HEAVY LOADS.



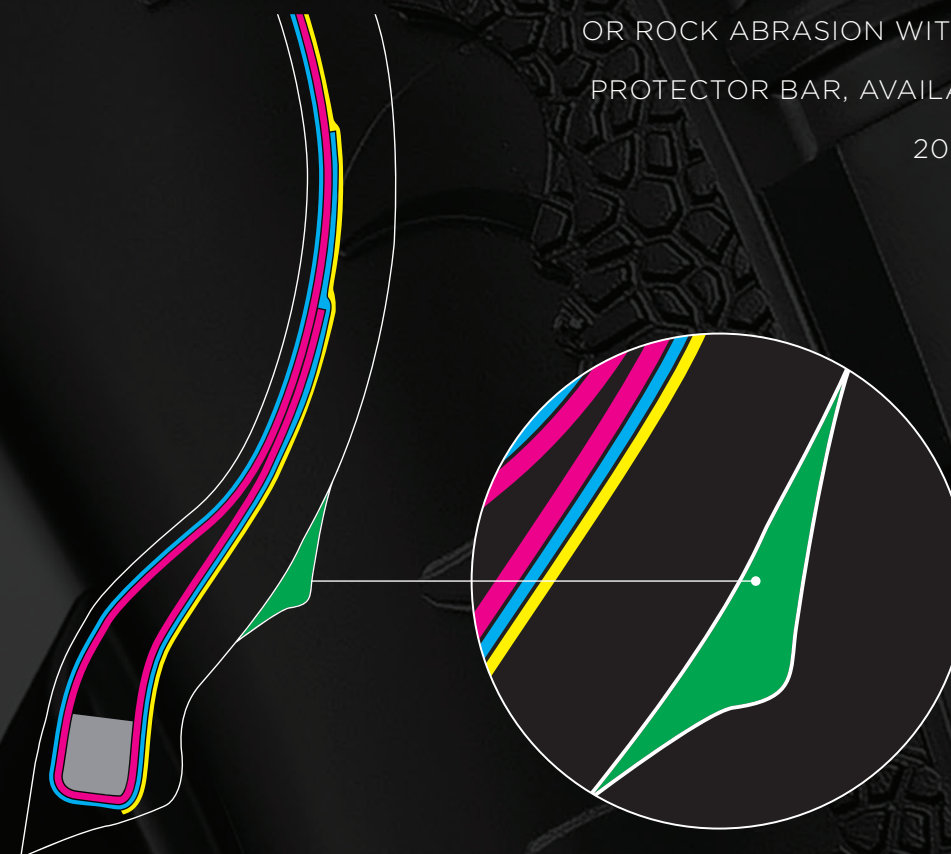
**ROADIAN MTX**  
3-PLY CARCASS ON  
ALL AVAILABLE MTX SIZES.



# THE BEST OFFENSE IS A GOOD DEFENSE.

## RIM PROTECTOR BAR

KEEP YOUR RIMS SAFE FROM CURB-RUB  
OR ROCK ABRASION WITH THE MTX RIM  
PROTECTOR BAR, AVAILABLE FOR RIMS  
20" AND LARGER.

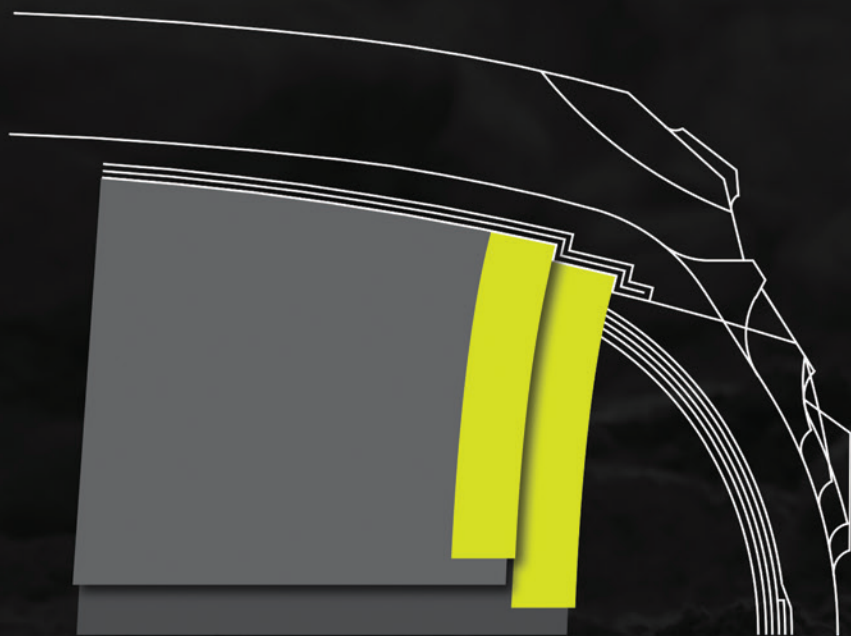


**ROADIAN MTX**  
RIM PROTECTOR BAR

# SUPPORT WHEN YOU NEED IT THE MOST.

## REINFORCED RUBBER BELT

MTX TIRES ARE MORE THAN AN EYE-CATCHING ACCESSORY; THEY'RE A PILLAR OF STRENGTH, ABLE TO ABSORB EVERYTHING YOU THROW AT THEM WITH A REINFORCED BELT CONSTRUCTION THAT DELIVERS LOAD-BEARING DURABILITY OVER A RANGE OF APPLICATIONS.



# PRACTICAL, DURABLE, INDUSTRIOUS.

## F-LOAD & 80 PSI

WHETHER YOU'RE HAULING HEAVY LOADS OR PRECIOUS CARGO, WE'VE GOT YOUR BACK. THE MTX SUPPORTS A MAXIMUM AIR PRESSURE OF 80 PSI IN BOTH LT METRIC AND FLOTATION APPLICATIONS, ALLOWING OWNERS TO SET TIRE PRESSURES TO MANUFACTURING RECOMMENDATIONS. THIS KEEPS TPMS SENSORS FUNCTIONING, AND THE HIGHER AIR PRESSURES PROVIDE FOR GREATER TOWING CAPACITY, DURABILITY, AND TIRE SAFETY THAN THE COMPETITION.

ROADIAN MTX

WHERE  
BEAST MEETS  
MACHINE.

A NEW MUD TERRAIN TIRE FOR 2018



35 SIZES  
AVAILABLE

15"-22"  
RIM SIZE

Q  
SPEED RATING

Inch	Product Code	Size	Load Index & Speed Symbol		Ply Rating	Max. Air psi	Max. Load (lbs)		Rim		Section Width inch	Overall Diameter inch	Tread Depth /32"	Sidewall
15	* 15867	33X12.50R15	108	Q	6	35	2,205	-	10.0	8.5-11.0	12.5	32.8	21.0	Black
	* 15871	35X12.50R15	113	Q	6	35	2,535	-	10.0	8.5-11.0	12.5	34.8	21.0	Black
16	15873	LT265/75R16	123/120	Q	10	80	3,415	3,085	7.5	7.0-8.0	10.5	31.9	19.0	Black
	* 15879	LT285/75R16	126/123	Q	10	80	3,750	3,415	8.0	7.5-9.0	11.3	33.1	19.0	Black
17	15883	LT235/80R17	120/117	Q	10	80	3,085	2,835	6.5	6.0-7.5	9.3	32.0	18.0	Black
	15884	LT245/75R17	121/118	Q	10	80	3,195	2,910	7.0	6.5-7.5	9.8	31.7	18.0	Black
	15886	LT255/75R17	111/108	Q	6	50	2,405	2,205	7.0	6.5-8.5	10.0	32.3	18.0	Black
	15887	LT265/70R17	121/118	Q	10	80	3,195	2,910	8.0	7.0-8.5	10.7	31.9	19.0	Black
	15713	LT285/70R17	121/118	Q	10	80	3,195	2,910	8.5	7.5-9.0	11.0	33.0	19.0	Black
	* 15888	LT295/70R17	121/118	Q	10	80	3,195	2,910	8.5	7.5-10.0	11.8	33.5	20.0	Black
	* 16398	LT305/65R17	121/118	Q	12	80	3,195	2,910	9.0	8.5-11.0	12.2	32.8	20.0	Black
	* 16399	LT315/70R17	121/118	Q	12	80	3,195	2,910	9.5	8.0-11.0	12.7	34.6	20.0	Black
	* 16261	33X12.50R17	121	Q	12	80	3,195	-	10.0	8.5-11.0	12.5	32.8	21.0	Black
	* 16262	35X12.50R17	121	Q	12	80	3,195	-	10.0	8.5-11.0	12.5	34.8	21.0	Black
18	* 16348	37X12.50R17	121	Q	12	80	3,195	-	10.0	8.5-11.0	12.5	36.8	21.0	Black
	15925	LT275/65R18	123/120	Q	10	80	3,415	3,085	8.0	7.5-9.0	11.0	32.3	19.0	Black
	15897	LT275/70R18	125/122	Q	10	80	3,640	3,305	8.0	7.0-8.5	11.0	33.4	19.0	Black
	15926	LT285/65R18	125/122	Q	10	80	3,640	3,305	8.5	8.0-10.0	11.5	32.8	19.0	Black
	* 15898	LT295/70R18	129/126	Q	10	80	4,080	3,750	8.5	7.5-10.0	11.8	34.5	20.0	Black
	* 16400	LT305/70R18	128/125	Q	12	80	3,970	3,640	9.0	8.5-10.0	12.2	35.1	20.0	Black
	* 16263	33X12.50R18	122	Q	12	80	3,305	-	10.0	8.5-11.0	12.5	32.8	21.0	Black
20	* 16264	35X12.50R18	128	Q	12	80	3,970	-	10.0	8.5-11.0	12.5	34.8	21.0	Black
	15929	LT275/65R20	126/123	Q	10	80	3,750	3,415	8.0	7.5-9.5	11.0	34.3	19.0	Black
	15932	LT285/55R20	122/119	Q	10	80	3,305	3,000	9.0	8.0-10.0	11.7	32.6	19.0	Black
	15933	LT295/55R20	123/120	Q	10	80	3,415	3,085	9.5	8.0-10.0	12.2	33.0	20.0	Black
	* 15931	LT295/60R20	126/123	Q	10	80	3,750	3,415	8.5	8.0-10.0	11.8	34.2	20.0	Black
	* 15930	LT295/65R20	129/126	Q	10	80	4,080	3,750	8.5	8.0-10.0	11.8	35.4	20.0	Black
	* 16271	LT305/55R20	125/122	Q	12	80	3,640	3,305	9.5	8.5-11.0	12.4	33.5	20.0	Black
	* 16265	33X12.50R20	119	Q	12	80	3,000	-	10.0	8.5-11.0	12.5	32.8	21.0	Black
	* 16266	35X12.50R20	125	Q	12	80	3,640	-	10.0	8.5-11.0	12.5	34.8	21.0	Black
	* 16267	37X12.50R20	128	Q	12	80	3,970	-	10.0	8.5-11.0	12.5	36.8	21.0	Black
22	* 16401	37X13.50R20	128	Q	12	80	3,970	-	11.0	8.5-11.0	13.6	36.8	21.0	Black
	* 16270	37X13.50R22	128	Q	12	80	3,970	-	11.0	8.5-11.0	13.6	36.8	21.0	Black
	* 16269	35X12.50R22	121	Q	12	80	3,195	-	10.0	8.5-11.0	12.5	34.8	21.0	Black
	* 16268	33X12.50R22	114	Q	12	80	2,600	-	10.0	8.5-11.0	12.5	32.8	19.0	Black

\* Available Mid-2018 for FDC Order.